

Backflow prevention: protecting our water supply

What is backflow?

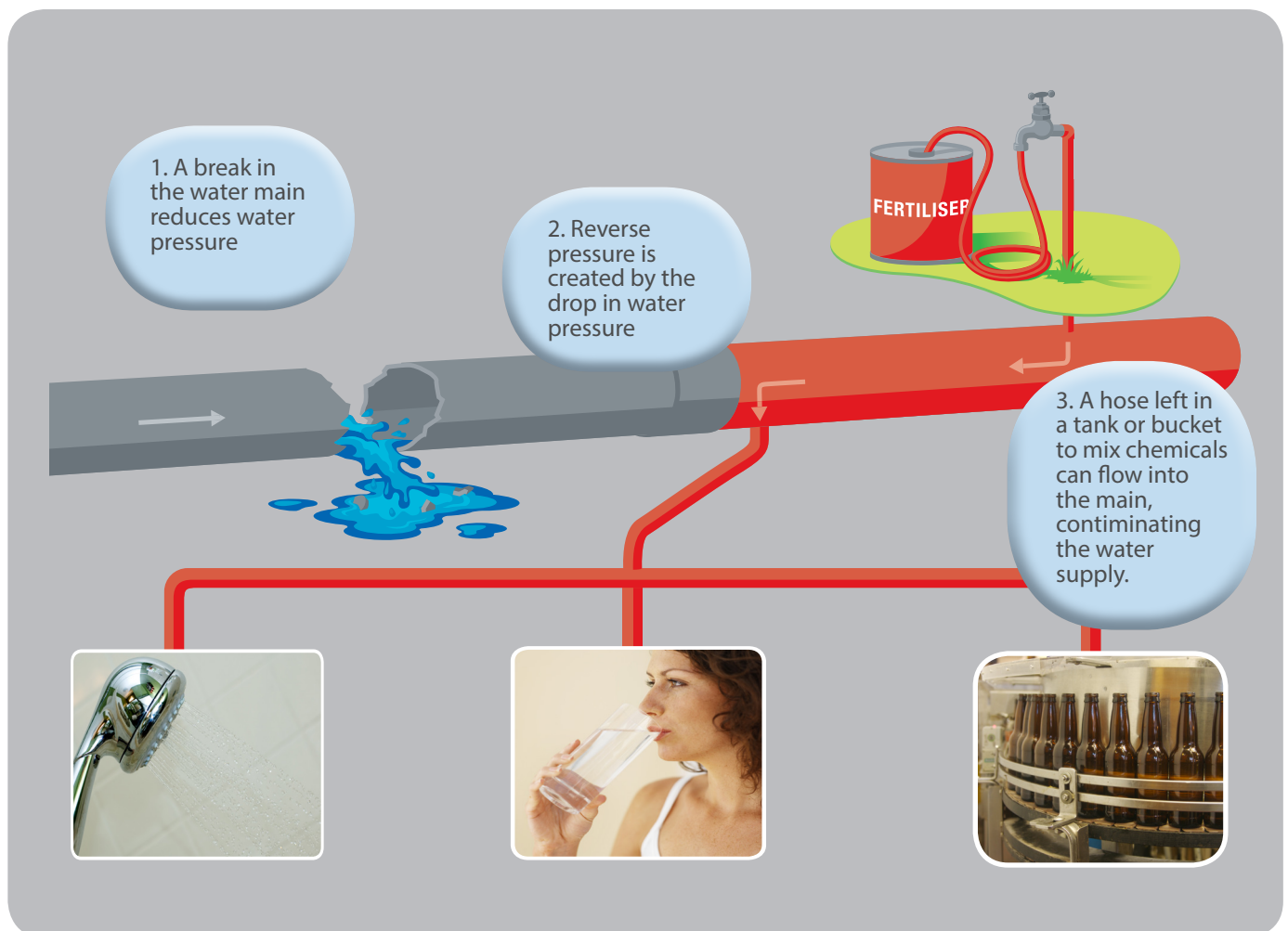
Backflow occurs when water flows opposite to its normal or intended direction.

Under normal conditions water flows in one direction, from the main water system into the pipes of your property. When the normal flow of water is reverse; that is, from the pipes on the property back into the water system, it is referred to as backflow.

How can backflow occur?

Backflow can occur when:

- there is a break in the water main which supplies your property
- water is being pumped from the main water supply during a fire
- you are using water at a higher pressure than the pressure supplied by Western Water
- high water demand from the main water system reduces water pressure to your property.



What does a backflow prevention device do?

Backflow can result in a public health risk if it allows pollutants or contaminants such as chemicals to enter the drinking water supply from your property.

A suitable backflow prevention device will allow water to enter the property through the water meter assembly, but will prevent the water from flowing back into the reticulated water supply network.



What is my responsibility as a property owner?

Western Water requires property owners to have a backflow prevention device that meets the requirements of the Australian Standards for Plumbing and Drainage (AS/NZS 3500.1:2015) and Water Supply – Mechanical Backflow prevention Devices (AS 2845– 1986) and Western Water’s Backflow Prevention Containment Guidelines.

The device must be installed by a plumber who is licensed by the Victorian Building Authority.

Costs associated with the installation, testing and maintenance of the backflow device are the responsibility of the property owner. Western Water can assist you with advice in this area. Please note that the device must be commissioned and tested by an appropriately licensed backflow plumber annually.

To ensure the safety of the public drinking water network Western Water will be auditing and inspecting properties.



FURTHER INFORMATION

For more information on Western Water’s Backflow Prevention Containment Guidelines and advice on prevention devices visit the building, renovating & developing/water backflow page on our website.

Contact Western Water’s Connections and Compliance Advisor by email to backflow@westernwater.com.au or call 9218 5560