

Water Meter Diary

Tracking your water usage

To record how much water you use, complete the following table. Western Water recommends that you read your meter around the same time each week. If you need help completing this diary, refer overleaf, visit westernwater.com.au or call us on 1300 650 422.

	Reading (at start of week)	Usage since last reading (subtract wk 1 from wk 2)	Per day usage (divide by 7)	No. of people in house	Usage per person (divide usage by no. of people)
Week 1 Example	852				
Week 2 Example	3162	2310	330	2	165
Week 1					
Week 2					
Week 3					
Week 4					
Week 5					
Week 6					
Week 7					
Week 8					
Week 9					
Week 10					
Week 11					
Week 12					
Week 13					
Week 14					
Week 15					
Week 16					
Week 17					
Week 18					
Week 19					
Week 20					
Week 21					
Week 22					
Week 23					
Week 24					
Week 25					



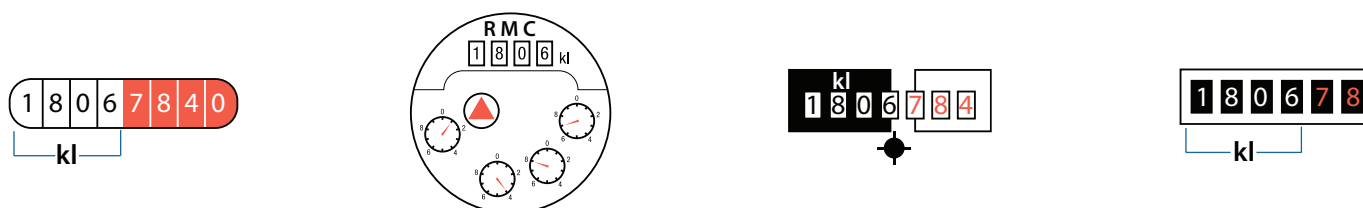
For more information call 1300 650 422 or visit us at WesternWater.com.au

WesternWaterAU @WesternWater

	Reading (at start of week)	Usage since last reading (subtract wk 1 from wk 2)	Per day usage (divide by 7)	No. of people in house	Usage per person (divide usage by no. of people)
Week 26					
Week 27					
Week 28					
Week 29					
Week 30					
Week 31					
Week 32					
Week 33					
Week 34					
Week 35					
Week 36					
Week 37					
Week 38					
Week 39					
Week 40					
Week 41					
Week 42					
Week 43					
Week 44					
Week 45					
Week 46					
Week 47					
Week 48					
Week 49					
Week 50					
Week 51					
Week 52					

Reading your meter

In this diagram, four different types of water meters are shown. The black numerals on the left hand side are kilolitres and the red numerals on the right hand side are litres.



For more information call [1300 650 422](tel:1300650422) or visit us at WesternWater.com.au

WesternWaterAU @WesternWater

