

Recycled water: Class A supply in the home

Class A recycled water is a safe, high quality alternate supply for use when drinking water quality is not required.

What is Class A recycled water?

As illustrated below, customer wastewater (sewage) is received at Western Water's recycled water plants and carefully treated to produce recycled water. Class A is the highest quality recycled water we produce.

Throughout treatment, recycled water is continually monitored and tested to ensure a safe, quality supply.

Class A recycled water is higher in nutrients than drinking water which is good for the garden and lawn.

Why use recycled water?

By using recycled water, residents can reduce their household drinking water consumption by up to 50 per cent helping to create an environmentally sustainable future for Victoria.

Because permanent water saving rules do not apply to recycled water, you can have healthy, green gardens all year round.

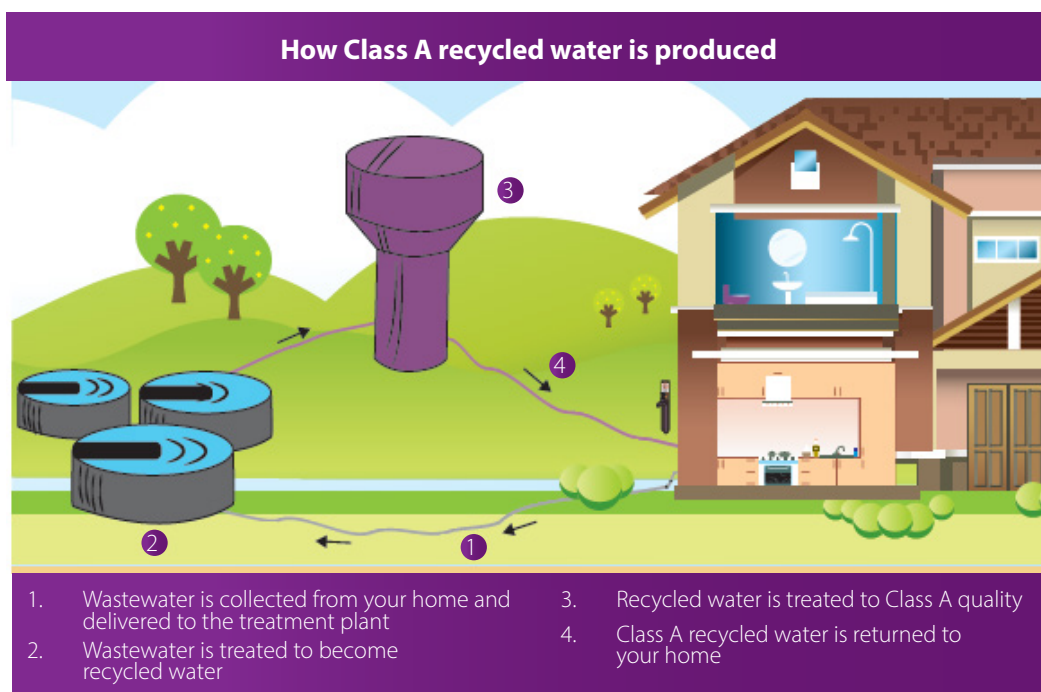
Finally, Class A recycled water is charged at the lowest water rate and is not part of the three tier usage structure. For this reason, customers using Class A recycled water may receive lower water usage charges.



ENVIRONMENTAL BENEFITS

By using recycled water, you are:

- Promoting sustainability by finding suitable uses for recycled water
- Decreasing demand on our precious drinking water supplies
- Reducing your environmental impact by using local water resources
- Protecting the environment from recycled water discharges.



CLASS A RECYCLED WATER USES



DO USE



- Flushing toilets
- Watering the garden, including vegetables
- Washing cars, outdoor furniture and external house cleaning
- Washing clothes
- Firefighting
- Filling ornamental ponds and water features (change water regularly to ensure no algae growth).

DO NOT USE FOR



- Drinking
- Cooking or other kitchen purposes
- Bathing, showering or swimming, including water play, children's water toys, and filling pools.

If you accidentally drink recycled water, the likelihood of becoming ill is very low. If there are signs of illness, please seek medical advice.

Your Responsibilities

It is your responsibility to inform all visitors and guests of the appropriate uses for recycled water.

Pipe maintenance and signage

Once you take ownership of your property, it's your responsibility to maintain and repair all plumbing within your premises. This includes replacing any discoloured purple pipe work and/or missing or damaged 'Recycled water do not drink' signs.

All plumbers working on your property should be licensed with the Victorian Building Authority.

Annual cross-connections checks

You're required to check for cross-connections on your property every 12 months.

A cross-connection is when the drinking water is incorrectly connected to a recycled water pipe and vice versa.

See the flyer 'It's time to check your connection' at WesternWater.com.au/cross-connections for detailed instructions.

ALL RECYCLED WATER TAPS & FITTINGS ARE PURPLE FOR EASY IDENTIFICATION



BUYING TAPS AND PARTS

Recycled water taps, accessories and signs can be purchased online or at major plumbing supply stores.

Frequently asked questions

Why do I have two charges?

Class A recycled water is supplied to your house through separate purple pipes, meters and taps. This extra supply was determined when your estate was being planned.

Having two meters and separate pipelines means you will receive two

water service and usage charges, one for drinking water and one for recycled water.

However, Class A recycled water can be cheaper to use than drinking water as it is charged at the lowest rate per litre no matter how much you use.

Can I wash my clothes in recycled water?

Yes, Class A recycled water is approved for clothes washing.

A factsheet on clothes washing with Class A recycled water is available at our website.