

Recycled water: Class A supply in the home

USE FOR
GARDENS,
TOILETS,
WASHING
CLOTHES &
CARS

Class A recycled water is a safe, high quality alternate supply for use when drinking water quality is not required. All recycled water taps and fittings are coloured purple for easy identification.

What is Class A recycled water?

As illustrated below, customer wastewater (sewage) is received at Western Water's recycled water plants and carefully treated to produce recycled water. Class A is the highest quality recycled water we produce.

Throughout treatment, recycled water is continually monitored and tested to ensure a safe, quality supply.

Class A recycled water is higher in nutrients than drinking water. This is good for the garden and lawn but not for the stormwater system, which ultimately flows into local waterways.

The permitted uses for Class A recycled water are listed in the box at right.

Why use recycled water?

By using recycled water, residents can reduce their household drinking water consumption by up to 50 per cent helping to create an environmentally sustainable future for Victoria.

Because permanent water saving rules do not apply to recycled water, you can have healthy, green gardens all year round.

Finally, Class A recycled water is charged at the lowest water rate and is not part of the three tier usage structure. For this reason, many customers using Class A recycled water receive lower water usage charges.



CLASS A USES

DO USE Class A recycled water for:

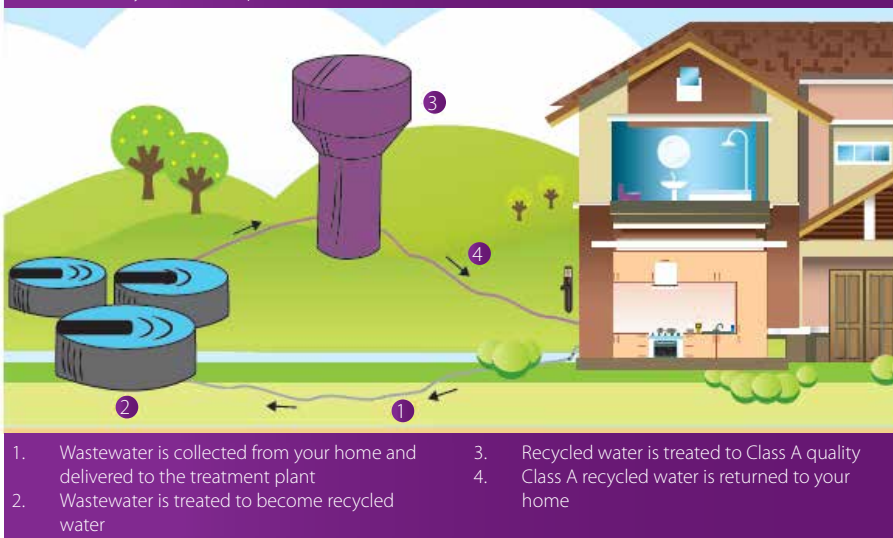
- flushing toilets
- watering the garden, including vegetables
- washing cars, outdoor furniture and external house cleaning
- pets' drinking water (except pigs)
- clothes washing machines
- fire fighting
- irrigating public places and sporting grounds
- filling ornamental ponds and water features (change water regularly to ensure no algae growth).

DO NOT drink, cook with, bathe, shower or swim in recycled water.

It should also not be used in childrens' water toys.

If you accidentally drink recycled water, the likelihood of becoming ill is very low. If there are signs of illness, please seek medical advice.

How Class A recycled water is produced



Your responsibilities

It is your responsibility to inform all visitors and guests of the appropriate uses for recycled water.

You must also ensure all external recycled water taps have a "Recycled water do not drink" sign and a removable handle. If not, signs can be purchased at local hardware stores. A licensed plumber can supply a removable tap handle.

Cross-connection checks

You are required to check the recycled water connection on your property every twelve months.

This is to ensure your recycled water supply has not been incorrectly connected to a drinking water pipe and vice versa.

Your property welcome pack contains a cross-connection check sticker which should be placed in your electrical meter box. It will help you, or your plumber, keep track of your annual checks.



Western Water may audit your home to check that the yearly cross-connection check has occurred.

Details on how to conduct a cross-connection check are in the box at right. For more details or to watch a video on the topic, visit westernwater.com.au and search for cross-connection.

If you find a problem with your water connections, or need help conducting the check, please contact Western Water on 1300 650 422.

HOW TO DO YOUR ANNUAL CHECK

To check your recycled water and drinking water connections, follow these instructions:

1. Turn off your drinking water supply at the meter.
2. Turn on all sink, bath and shower taps inside the house and flush all toilets. The taps should run dry but the toilets should fill as normal.
3. Turn on all taps outside the home. The purple taps should run normally; drinking water taps should run dry.
4. Turn the drinking water meter back on and turn off the purple recycled water meter.
5. Turn on appliances (e.g. dishwashers) to ensure they fill.
6. Turn the recycled water meter back on.
7. When you turn your first tap on, do so slowly to allow any trapped air to escape.

Frequently asked questions



Why do I have two charges?

Class A recycled water is supplied to your house through separate purple pipes, meters and taps. This extra supply was determined when your estate was being planned.

Having two meters and separate pipelines means customers will receive two water service and usage charges, one for drinking water and one for recycled water.

However, Class A recycled water can be cheaper to use than drinking water as it is charged at the lowest rate per litre no matter how much you use.

Who maintains the recycled water pipes at my home?

Once you take ownership of your property, it is your responsibility to maintain and repair all plumbing within and replace any discoloured purple pipe work and/or any missing or damaged "Recycled water do not drink" signs. All plumbers working on your property should be licensed with the Victorian Building Authority.

Where can I get a replacement recycled water tap or sign?

Signs and purple plumbing items can be purchased through a licensed plumber or at a plumbing supplier.

Can I wash my clothes in recycled water?

Yes, Class A recycled water has been approved for clothes washing following a successful trial in Eynesbury across 2014 and 2015.

Western Water suggests customers follow CHOICE recommendations for cleaning your washing machine as well as for laundry detergent selection.

A factsheet on clothes washing with Class A recycled water is available on request from Western Water.

What about people who already live in a dual supply estate but do not have a recycled water tap in the laundry?

Owners of existing homes in dual supply areas can install a recycled water laundry tap at their own expense.